



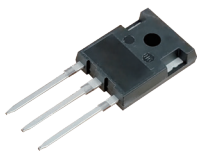
车规级功率器件

宏微科技汽车级功率器件以卓越效能与可靠性赋能电动汽车核心系统、DC/DC转换及充电桩。凭借先进技术与车规级封装设计，该系列产品在极端工况下仍保持稳健性能，通过优化能源利用效率和充电能力，为智慧出行提供关键技术支撑。

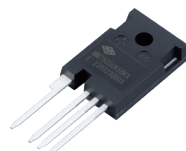
车规级分立器件



TO-247-3L



TO-247-H3L



TO-247-4L



TO-263-7L

Part Number	V _{DC} (V)	I _C (A)	V _{CE(sat)} (V)	Package Outline
MMQ75G7T65B	650	75	1.40	TO-247-3L
MMQ50G7T120BHG	1200	50	1.52	TO-247-H3L

Part Number	V _{DC} (V)	I _D (A)	R _{ds(on)} (mΩ)	Package Outline
MMQ30N3S120BK	1200	65	30	TO-247-4L
MMQ13N3S120BK	1200	149	13	TO-247-4L
MMQ30N3S120SJ	1200	75	30	TO-263-7L

江苏省常州市新北区新竹路5号（新竹路厂区）
江苏省常州市新北区华中路18号（华中路厂区）

+86-519-85166088

sales@macmicst.com

www.macmicst.com

商标声明：、、宏微、MACMIC 是江苏宏微科技股份有限公司的商标。



宏微科技官网



微信公众号

• • • 车规级功率模块 • • •



GVB Series
750V / 400A



GVD Series
750V / 280A, 400A



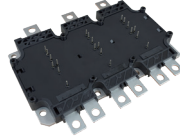
GVC Series
750V / 400A



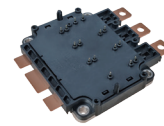
GV / NV Series
IGBT: 750V, 1200V / 600A, 820A, 950A
SiC: 1200V/439A, 540A



GWB Series
1200V / 450A, 600A, 800A



GVE Series
750V / 770A, 880A



GVF Series
750V / 500A

Circuit	Part Number	V _{CEs} min. (V)	I _c TC=65-110°C (A)	V _{CE(sat)} @T _J =25°C typ. (V)	Package Outline
<p>B</p> <p>X</p> <p>X</p>	MMG450WB120B6TC	1200	450	1.85	GWB
	MMG600WB120B6T6_W11	1200	600	1.70	GWB
	MMG800WB120B6T7_W11	1200	800	1.80	GWB
	MMG280VD075X6T7	750	280	1.38	GVD
	MMG400VD075X6TC-12	750	400	1.40	GVD
	MMG400VB075X6TC	750	400	1.21	GVB
	MMG400VC075X6TC	750	400	1.21	GVC
	MMG600V075X6T7	750	600	1.10	GV
	MMG820V075X6T7	750	820	1.10	GV
	MMG950V075X6T7	750	950	1.15	GV
	MMG600V120X6T7	1200	600	1.38	GV
	MMG770VE075X6T7	750	770	1.20	GVE
	MMG880VE075X6T7	750	880	1.00	GVE
MMG500VF075X6T7	750	500	1.28	GVF	

Circuit	Part Number	V _{BS} min. (V)	I _D (A)	R _{ds(on)} (mΩ)	R _{th/jF} /R _{th/jC} (K/W)	T _{jmax}	Package Outline
<p>X</p>	SiC						
	MMN02V120X6BS	1200	439	2	0.118	175°C	NV
	MMN01V120X6BS	1200	540	1	0.105	175°C	NV